

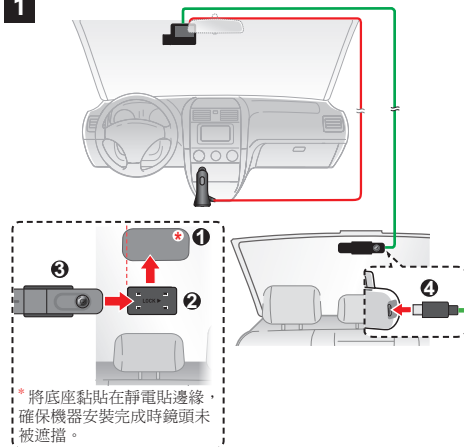
注意事項

- 注意！駕駛中請勿操作本產品。使用本產品時，駕駛者仍必須對本身行為負完全責任，包括恪遵所有交通規則與法規，以避免發生交通事故或造成任何生命、身體傷害或財產損失。
- 本產品安裝於車內時，不可隨意擺放而不加以固定，不可放在會阻礙駕駛視線之處。
- 若鏡頭被任何物品擋住，本產品將無法正常運作，請保持鏡頭的乾淨。當有其他物品放在本產品周圍，也可能因為鏡面反射而導致該物品的影子被錄進影像中，請勿在本產品周圍放置任何不需要的物品。
- 汽車擋風玻璃若有上色（例如可見光透視率較低的隔熱紙），錄製的影像可能會品質不佳或失真。

安全規範

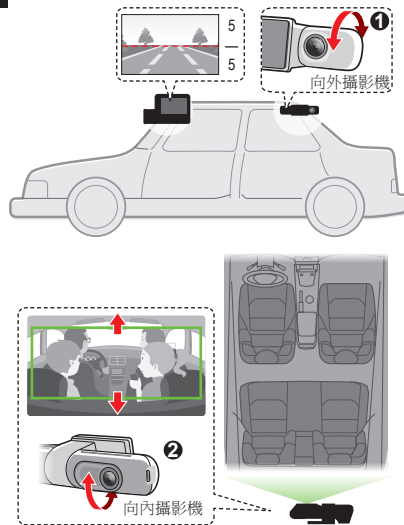
基於管制辨識的便利性，本系列機型號碼指定為N704及N704W。

1

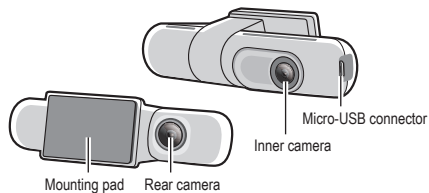


- 安裝後鏡頭時，請確定汽車停放於水平地面。用乾淨的軟布或酒精擦拭擋風玻璃，徹底清潔以確保黏貼處無油污、灰塵或不平整，以免影響其牢固性。
- 先將靜電貼吸附在擋風玻璃，再將後鏡頭保持水平黏貼在靜電貼上，並注意以下幾點：
 - 黏貼位置應避開玻璃除霧線。
 - 將鏡頭安裝於雨刷範圍內（適用於特定車款）。
 - 鏡頭未被靜電貼擋住以免影響錄影品質。
 - 靜電貼如無破損、凹折，即可重複使用。
- 請妥善架設線組（例如繞過車子的擋風玻璃）並固定其位置，以避免干擾駕駛者的視線及動作。如果您不熟悉車內線組的架設及固定方法，建議您交由專業技術人員安裝。

2



調整向外攝影機的角度以確保車外影像中地面與天空的比例大約為5:5，並調整向內攝影機的角度以獲得適當的車內影像。



Precautions and notices

- For your own safety, do not operate the device while driving.
- Make sure that you place the rear camera in an appropriate place, so as not to obstruct the driver's view.
- Make sure that no object is blocking the camera lens and no reflective material appears near the lens. Please keep the lens clean.
- If the car's windscreen is tinted (e.g., with automobile window film), it may affect the recording quality.

Regulatory information

For regulatory identification purposes, the product is assigned a model number of N704. Hereby, MiTAC declares that this N704 is in compliance with the essential requirements and other relevant provisions of Directive 2014/53/EU. Visit Mio website (www.mio.com) for the full text of the declaration for your device.

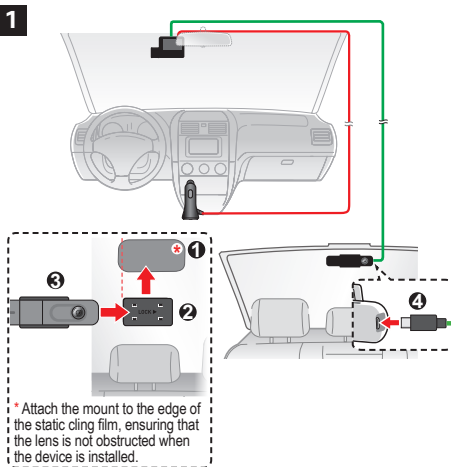


5 6 1 5 N 7 0 4 0 0 1 1 R 0 0



Revision: R00
(11/2024)

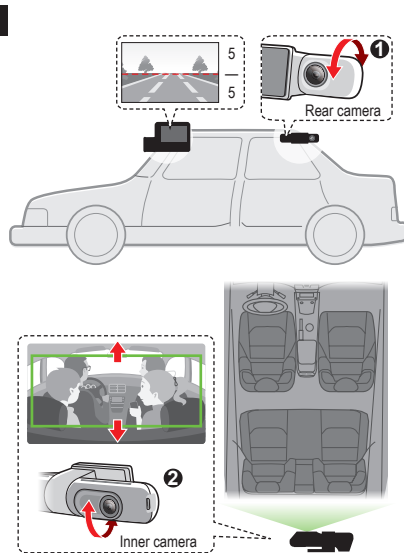
1



1. Make sure that your car is parked on level ground. Before sticking the mounting pad, it is recommended to clean the windscreen with rubbing alcohol. If the adhesion of the adhesive tape does not perform well, replace the tape with a new one.
2. Attach the static cling film to the windscreen, and then install the rear camera over the static cling film. **Make sure that no object is blocking the camera lens and no reflective material is placed near the lens.** The static cling film is reusable if you tear it off carefully.
3. Route the cables through the top ceiling and the A-pillar so that it does not interfere with driving. Make sure that the cable installation does not interfere with the vehicle's airbags or other safety features.

The installation illustrations are for your reference only. If you encounter any problems during installation, please contact a skilled installer (for example, the service personnel of the vehicle) for assistance.

2



When adjusting the camera lens angle, ensure that the rear camera's view is parallel to the ground with a ground/sky ratio close to 50/50, and that the inner camera captures a proper cabin image.