

# CycloAgent User Manual



The best  
**EXPERIENCE**  
in bicycle  
navigation

---

# Table of contents

---

Introduction ..... 2

Uninstalling the current MioShare desktop tool..... 2

Installing CycloAgent..... 3

Using CycloAgent..... 7

    Registering your device..... 8

    Backing up and restoring your Cyclo ..... 10

    Accessing the MioShare website ..... 11

    Updating CycloAgent ..... 11

    Customising the CycloAgent settings..... 13

---

# Introduction

CycloAgent™ is a tool for synchronising data between your Cyclo™ device and the MioShare™ website, and for managing and updating your Cyclo device via your computer. It helps you easily share your experiences with other cyclists around the world through the Internet when your Cyclo device is connected to the computer.

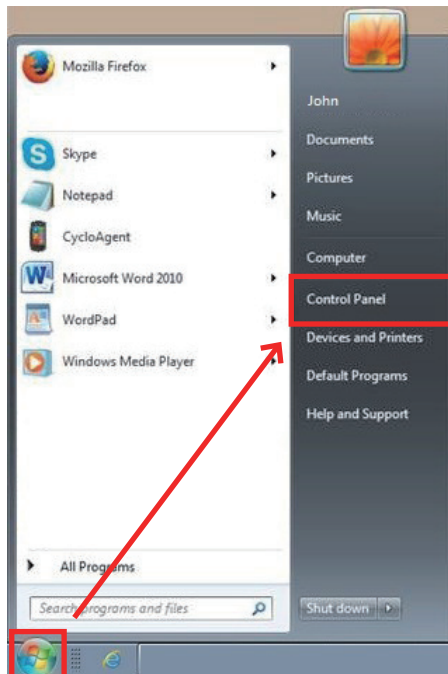
Before using CycloAgent:

- You need to first uninstall the current MioShare desktop tool from your computer and then install the latest CycloAgent desktop tool.
- Visit the MioShare website (<http://mioshare.com/>) and create your MioShare account.

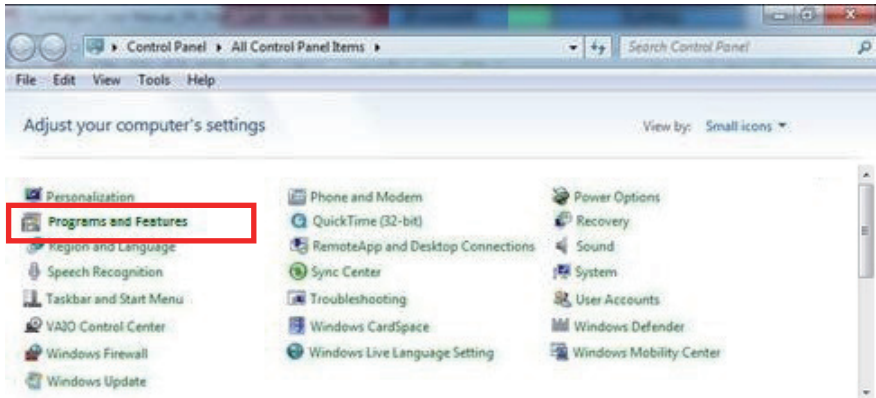
## Uninstalling the current MioShare desktop tool

To uninstall the current MioShare desktop tool from your computer:

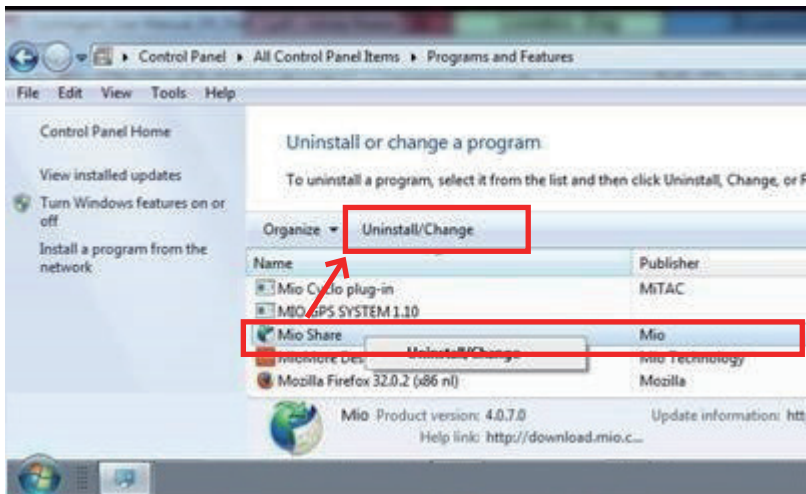
1. Click the Windows Start icon and then click **Control Panel**.



2. Click **Programs and Features**.



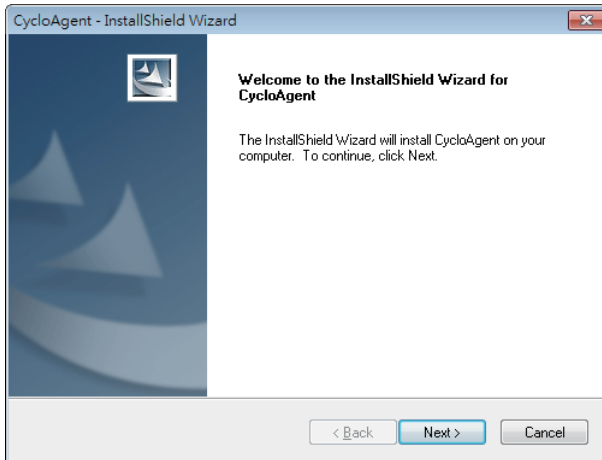
3. Select **Mio Share** from the program list, click **Uninstall/Change** and then click **OK**.



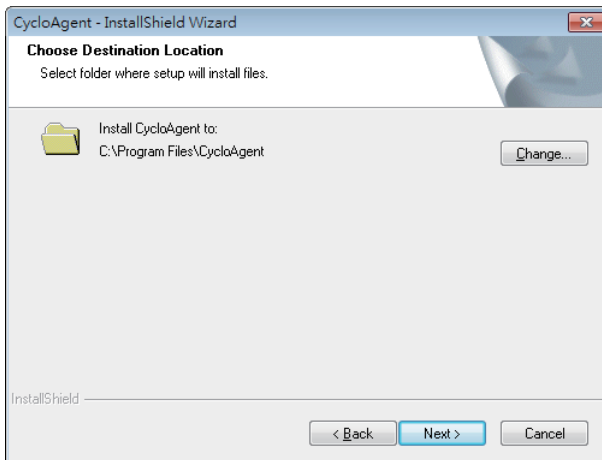
## Installing CycloAgent

1. Visit <http://mioshare.com/>.
2. Sign in with your MioShare account.
3. Click **Download CycloAgent** to download the latest CycloAgent desktop tool when prompted.

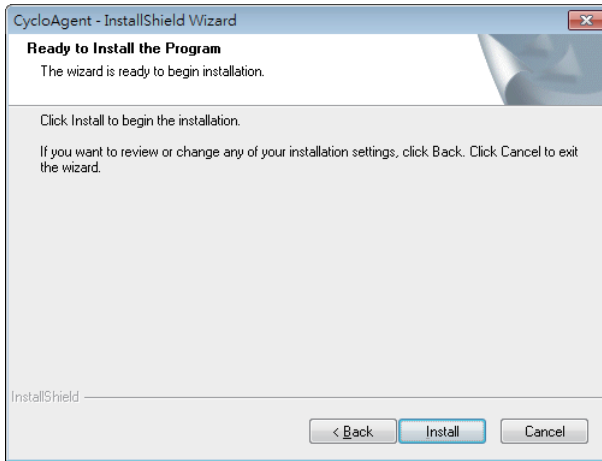
- 
4. Double-click the downloaded executable (.exe) file.
  5. Click **Next** on the welcome screen.



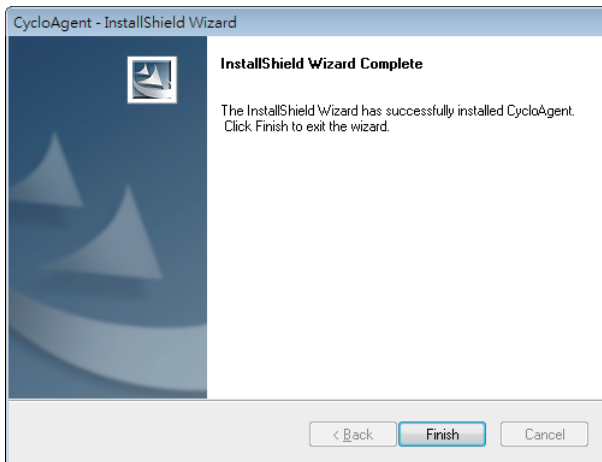
6. Click **Next** on the destination location screen.



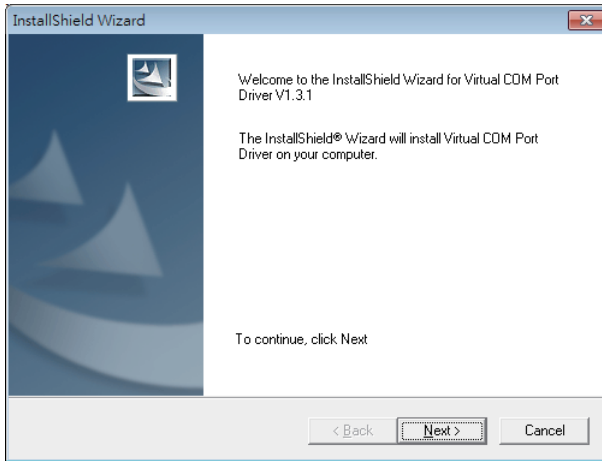
7. Click **Install** to start the installation.



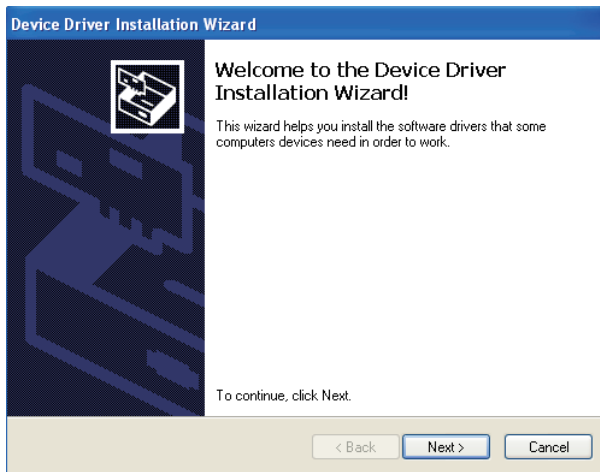
8. Click **Finish** to close the CycloAgent installation window.



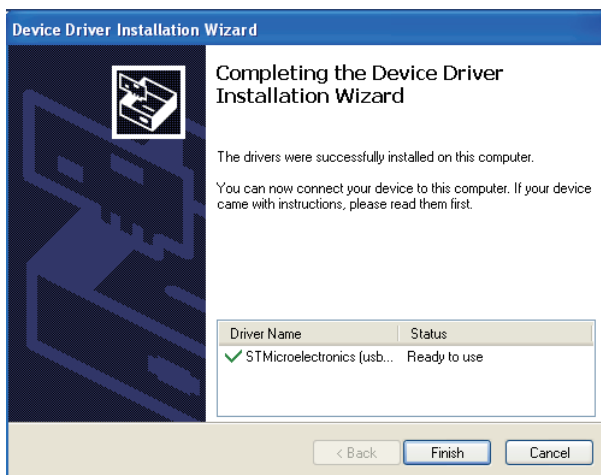
9. When prompted with the driver installation, click **Next** to proceed.



10. Click **Next** to start the driver installation.



11. Click **Finish** to close the driver installation window.



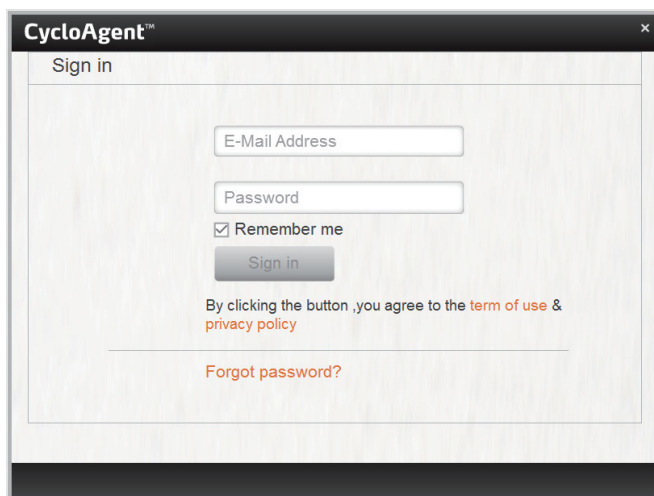
After the installation is complete, the Mio™ Cyclo icon () will appear in the Windows system tray.

By default, CycloAgent will run in the background after the installation. When you connect your Cyclo to your computer via a USB cable and select the **Connect to PC** option on your Cyclo, CycloAgent will start automatically. CycloAgent will automatically detect your Cyclo and start to synchronise data with the MioShare website.

## Using CycloAgent

1. Make sure you have an active Internet connection when using CycloAgent.
2. Turn on your device and then connect it to the computer. When prompted, select the **Connect to PC** option.
3. Sign in by entering your email address and password, and then clicking **Sign in**.





4. After signing in , you will see the CycloAgent screen that contains 3 tabs: **My Device**, **Settings** and **MioShare**.

5. To sign out, click **Sign out** at the bottom of the CycloAgent screen.

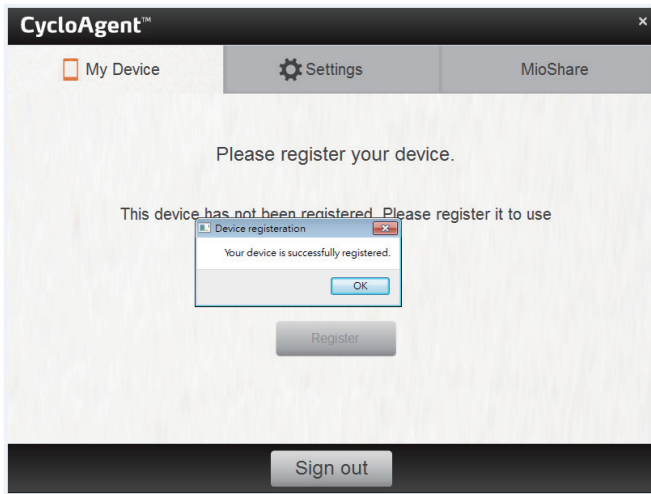
## Registering your device

1. Click the **My Device** tab to view the device connection status.

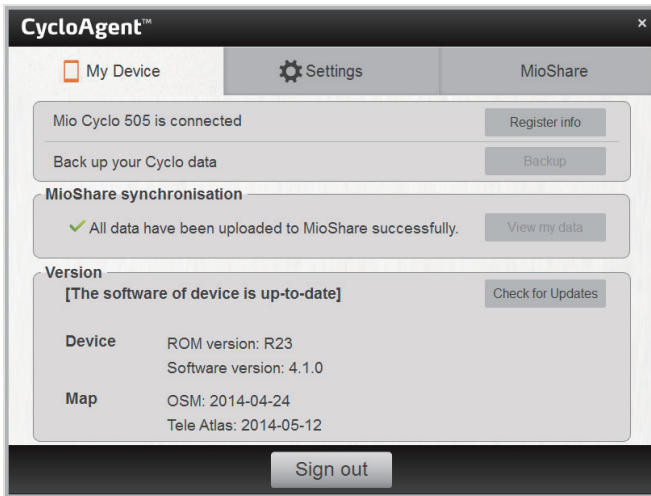
If you have not registered your Cyclo device yet, click **Register** for registration.



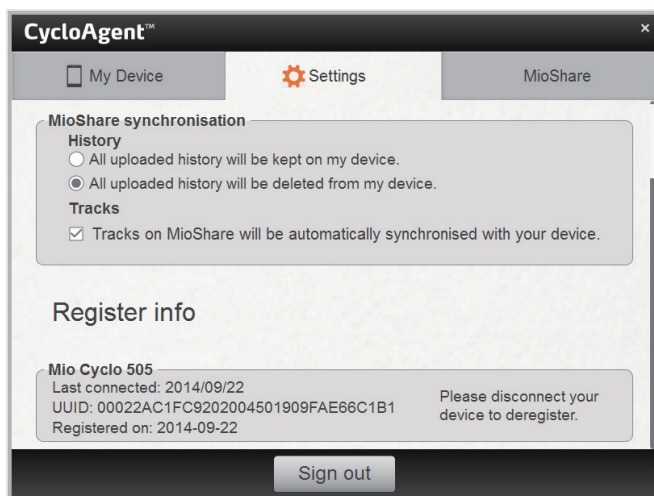
- When prompted, click **OK** to close the notification window.



- You will then see the device information screen.

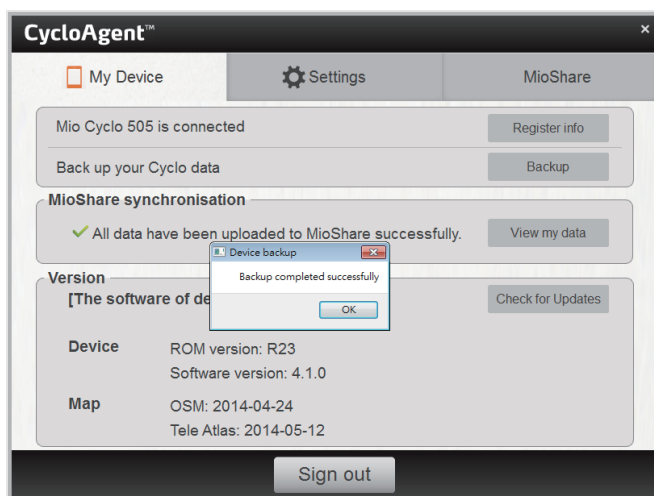


To view the detailed registration information, click **Register info**. The screen will switch to the **Settings** tab. Scroll down the screen to view the registration information.

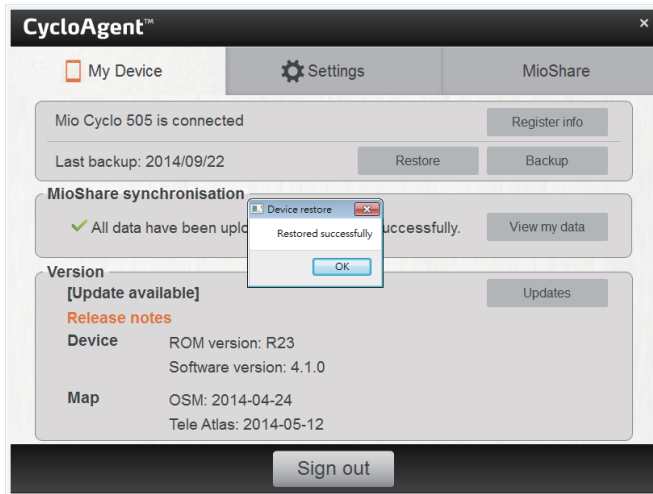


## Backing up and restoring your Cyclo

To back up the data of your Cyclo device to the specified location of your computer, click **Backup**. Click **OK** when prompted to close the notification window.



To restore the data of your Cyclo device from the previous backup, click **Restore**. Click **OK** when prompted to close the notification window.



## Accessing the MioShare website

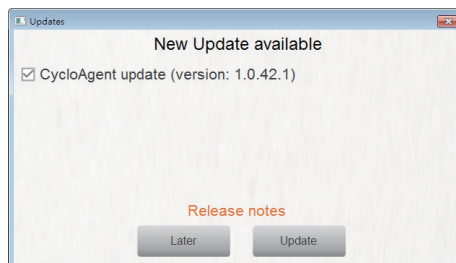
To access the MioShare website from CycloAgent, do one of the following:

- Click the **My Device** tab and then click **View my data**.
- Click the **MioShare** tab.

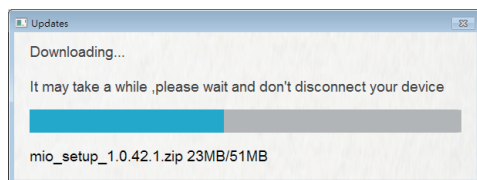
## Updating CycloAgent

To check whether there is a newer version of CycloAgent:

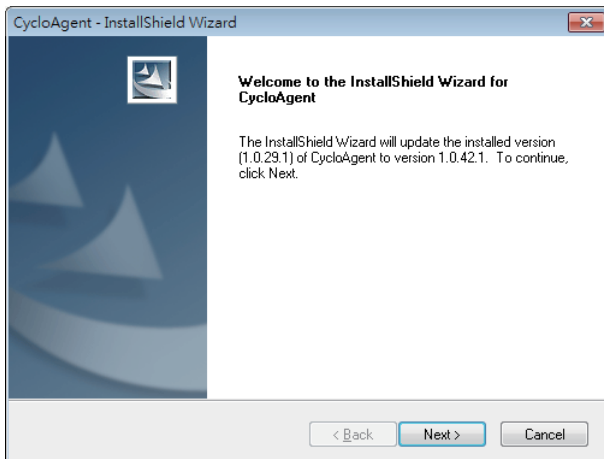
1. Click the **My Device** tab and then click **Updates** (or **Check for Updates**, depending on the CycloAgent version).
2. When prompted, click **Update** to update CycloAgent immediately. (You can also select **Later** for update at a later time.)



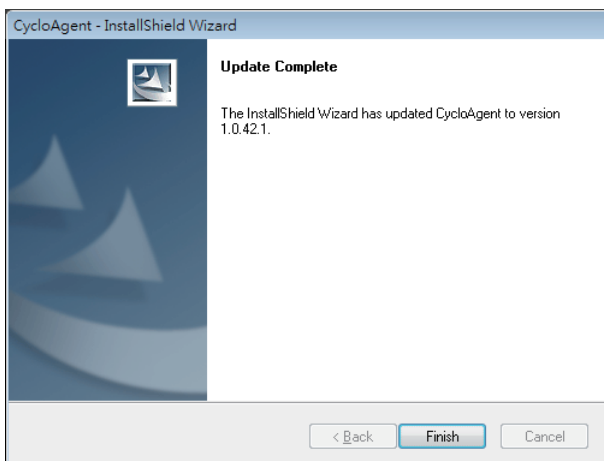
3. After clicking **Update**, the program update file will be downloaded automatically.



4. Wait and click **Next** when prompted on the welcome screen.



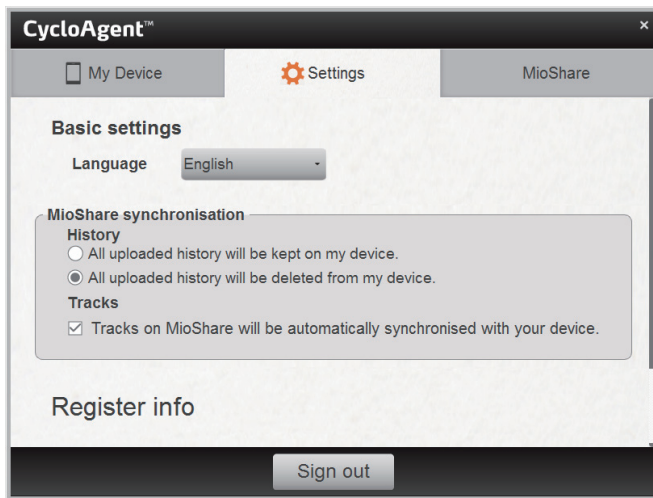
5. When prompted, click **Finish** to close the installation window.



---

## Customising the CycloAgent settings

To change the CycloAgent settings, click the **Settings** tab.



You can do the following:

- To change the display language of CycloAgent, select the desired language from the **Language** drop-down list.
- To change the synchronisation setting for History with the MioShare website, select one of the options:
  - **All uploaded history will be kept on my device**
  - **All uploaded history will be deleted from my device** (default)

Note that by default, History cannot be restored on your Cyclo device anymore. If you would like to restore the track on your device, please save it from the MioShare website. You will find the track in the Navigate/Tracks menu.

- To change the synchronisation setting for Tracks with the MioShare website, select (default) or deselect the check box of the **Tracks on MioShare will be automatically synchronised with your device** option.

---

Revision: R00  
(September, 2014)

**Trademarks**

All brand and product names are trademarks or registered trademarks of their respective companies.

**Disclaimer**

Specifications and documents are subject to change without notice.

